

Monique Lerchner

RDA Riverina

GROW Backbone Coordinator



More jobs than people - Attracting and retaining a skilled workforce

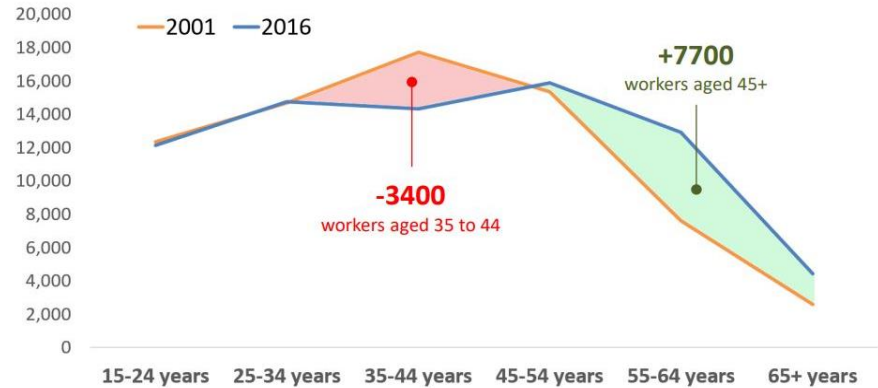
More Jobs than People.....

The Workforce is Ageing

More Jobs than People.....



Age profile of employed persons, 2001 and 2016, Riverina RDA



Source: ABS, Census of Population and Housing, 2001, 2016
Place of enumeration has been used for historical comparability purposes

Riverina Skills Study

More Jobs than People.....



RDA Riverina: Workforce Development Plan



Secondary refugee
resettlement

DAMA

Skilled migration



Country Change

Grow Our Own



The Refugee and Migrant jobseeker relocation to regional NSW project – a collaborative approach

 Promoting the Region

Promoting the Region

Regional Resettlement of Refugees





Regional
Development
Australia

R I V E R I N A N S W

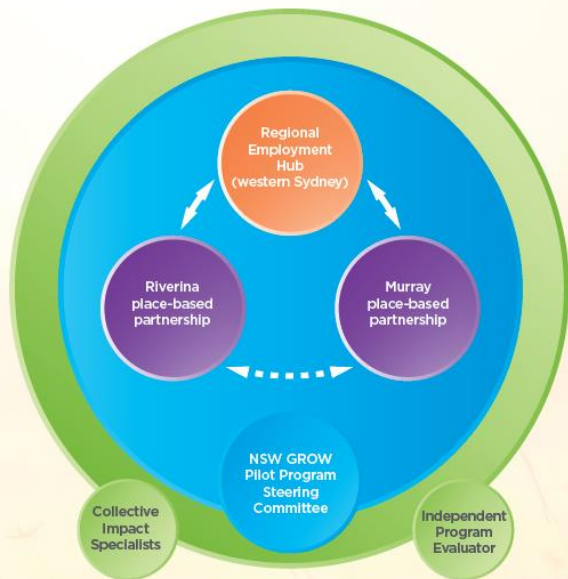
Secondary Refugee Resettlement



A Regional Employment Hub in western Sydney to engage with newcomer individuals and families interested in relocation, connect them with identified opportunities and support their relocations.



Two place-based, strategic partnerships in the Murray and Riverina regions of NSW to develop local attraction and retention strategies (led by a local Backbone Coordinator and facilitated by Collective Impact specialists).



An overarching Program Steering Committee comprised of senior government, community and policy experts that will monitor program outcomes, seek to align existing programs and resources to support regional resettlement and champion place-based approaches to secondary settlement across government.



Multicultural
NSW

GROW
NSW GROWING REGIONS OF WELCOME
PILOT PROGRAM

STRATEGIC FRAMEWORK

DECEMBER 2020

NSW GROW

WHAT IS THE PURPOSE OF NSW GROW?

Drive sustainable social and economic outcomes for participating regional communities and newcomers

Support coordinated efforts across sectors to create secondary migration linkages between western Sydney and regional NSW

WHAT DOES NSW GROW AIM TO ACHIEVE?

Strengthen regional community capability and willingness to attract and retain newcomers

Coordinate a collective impact approach to regional resettlement in NSW

Assist interested newcomers in western Sydney to relocate to regional NSW for employment and lifestyle opportunities

GUIDING PRINCIPLES

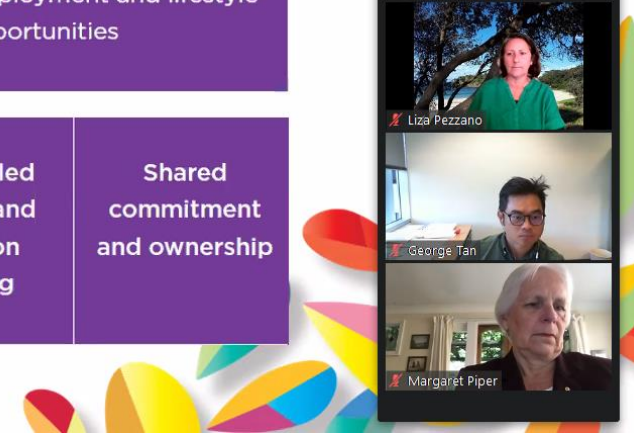
Human rights approach

Lived experience at the heart of doing

Strengths focussed

Locally led design and decision making

Shared commitment and ownership





Welcoming
Australia



- Local Facilitators are auspiced by participating Councils on behalf of NSW GROW Riverina Regional Taskforce
- In the Riverina the 3 LGAs with this project are Griffith, Leeton and Temora.
- the Griffith Local Facilitator will lead community consultations with stakeholders in Griffith to test/validate the research gathered by Welcoming Australia.
- Welcoming Australia will provide the framework for and guide this process. Local Facilitators will report to the relevant Council and work closely with Welcoming Australia and will be supported by the NSW GROW Riverina Backbone Coordinator (Monique Lerchner – RDA Riverina)
- NSW GROW Riverina Backbone Coordinator (Monique Lerchner- RDA Riverina) leading a Riverina Working Group (that includes the Local Facilitators) to share learnings from the Project and provide a communication channel back to the NSW GROW Regional Taskforces
- Multicultural NSW coordinating from a NSW GROW perspective and delivering the Local Facilitator Grant process.



Welcoming
Australia



Regional
Development
Australia
R I V E R I N A N S W

- Welcoming Australia (Project Lead)
- Multicultural NSW (NSW GROW Lead)

NSW GROW Riverina Backbone organisation

- Regional Development Australia Riverina - Rachel Whiting and Monique Lerchner
- Red Cross – Neil Barber, Nadine Whalan and Esiteli Nyirarukundo

The research and community consultations will report on:

- Community preparedness and receptiveness
- Service accessibility and connectedness
- Employment opportunities, priorities and access pathways
- Lived experience which may assist newcomer decision making.

RDA Riverina: Workforce Development Plan



Secondary refugee
resettlement

DAMA

Skilled migration



Country Change

Grow Our Own





INLAND GROWTH SUMMIT

HOUSING 2021

Save The Date: August 13, 2021



Inland Growth Summit Housing 2021

The benefits of living regionally are being acknowledged far and wide, yet inland Australia is facing a housing shortage. What can we do to solve this problem in the short, medium, and long term? Whose role is it to do what? How can we best work together? This one-day forum will examine a range of issues on regional housing with must-see speakers including The Hon Nola Marino MP, Assistant Minister for Regional Development and Territories. Limited tickets available soon.

Friday 13 August 2021 | Wagga Wagga NSW

For more information email, ceo@rdariverina.org.au or admin@rdaorana.org.au

Our Vision

"A regional powerhouse recognised for production, value-adding, linkages and entrepreneurship."

Thank you

Contact:

Monique Lerchner

coordinator@rdariverina.org.au

Website Links

www.rdariverina.org.au

www.growourownwr.org.au

www.countrychange.com.au

www.jobsriverina.com.au